

Crane Truck

Mercedes Benz flat tray truck with crane

Tray size: 6.4 x 2.45m
(can carry a 20foot container)

Load capacity: 6.5 tons

Crane: Ferrari 197-3

Crane load torque: 182 kNm

Korevaar's Crane Truck is capable of transporting:

- a standard 20 foot container (TEU)
- one of the company's 6m Steel pontoons

As well as moving the company's pontoons and equipment, the Crane Truck is used by marine contractors and engineering companies throughout the Melbourne metropolitan area.

In the past two years the Crane Truck has been used to transport, amongst other items:

- generators
- anchor chains and windlasses
- gangways
- engines
- a screw elevator
- bunker hoses
- lifeboats
- steel plate and rod
- engineering parts
- a ship's rudder for repair
- conveyor units
- shipping containers



Crane Truck unloading a 6m Steel pontoon



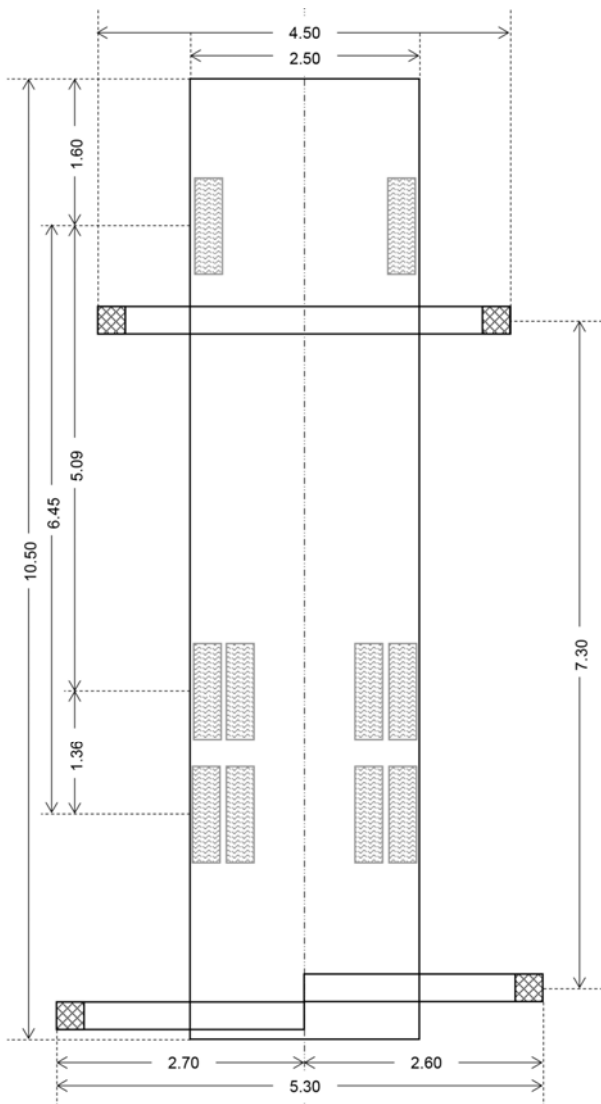
Crane Truck loaded with two 6m Aluminium pontoons



Crane Truck relocating boat cradle at the company's workshop

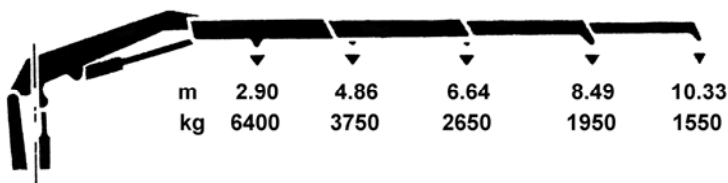


Crane Truck



Dimensions

Wheelbase		
Length (max)		6.46 m
Width		2.30 m
Outriggers		
Front (max extension)		4.50 m
Rear (max extension)		5.30 m
Lengthwise (max)		7.90 m
Axle loading (unladen)		
Front		4140
Rear		11260



Crane

Capacity (on hook)		
Extension (m)		Capacity (kg)
2.90		6400
4.86		3750
6.64		2650
8.49		1950
10.33		1550
Capacity (on running wire)		
All extensions		1000

